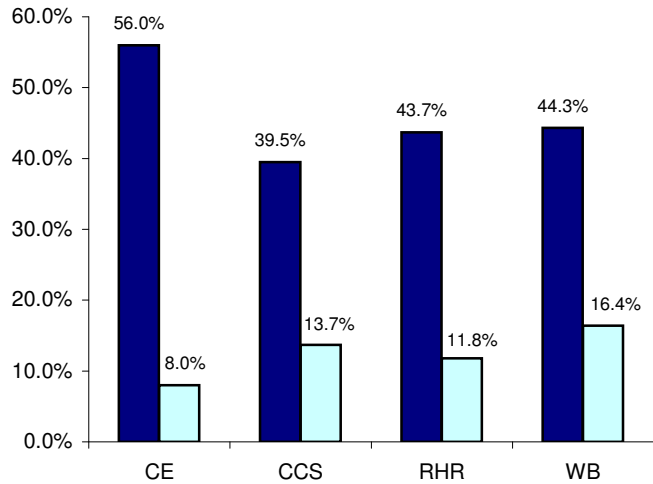


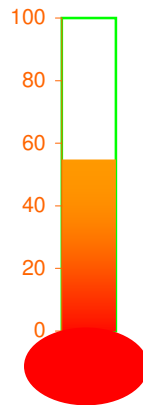
Sickness Balanced Scorecard - February Report SBC (Sep 12 - Feb 13)

	CE 25	CCS 476	RHR 263	WB 659	Total 1423
Number of staff overall					
Staff sick for at least 1 day	14	188	115	292	609
Staff that met the 6 day sickness trigger	2	65	31	108	206
Staff had stage 1 meeting when 6 day trigger met	0	22	18	39	79
Staff with further absence after stage 1 meeting	0	9	6	14	29
If further sickness, stage 2 meeting taken place	0	3	1	4	8
Staff with further sickness after stage 2 meeting	0	2	1	2	5
Staff that have had a Director Review	0	1	0	1	2

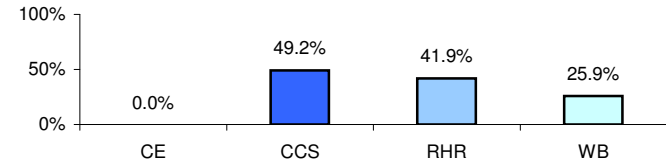
■ % of staff that were absent □ % of staff that hit the 6 day trigger



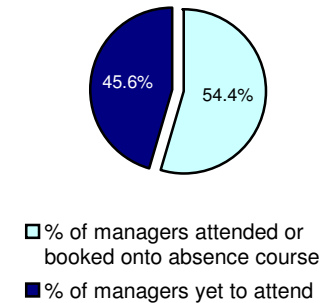
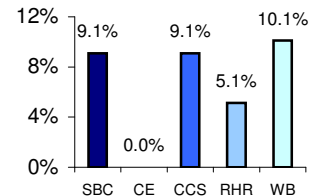
Overall Sickness Management Score **54.8**



% of staff that met the 6 day trigger referred to OH

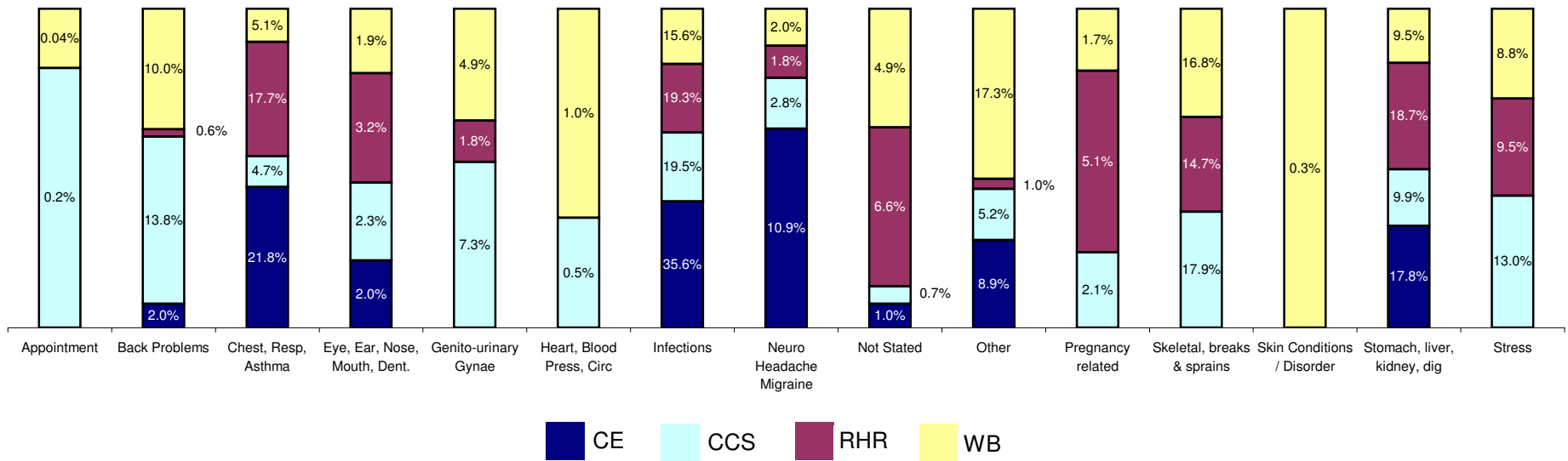


% of staff who failed to attend booked OH

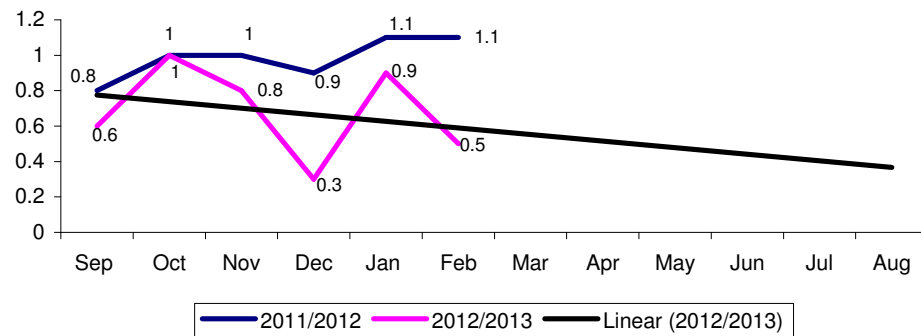


Sickness Balanced Scorecard cont - February Report SBC (Sep 12 - Feb 13)

Percentage of sick days per reason (Sep 1st - Feb 28th)



Number of sick days per FTE (Monthly)



The line graph shows how the sickness days per FTE are significantly lower this year in SBC. The trendline indicates that the sick days per FTE will reduce to 0.45 days a month by the end of August 2013. It also shows that the projected sick days per FTE from 1st Sep 2012 to 31st Aug 2013 would be 6.9 sick days per FTE.